

**RUTH ECKERD HALL**  
**GENERAL TECHNICAL SPECIFICATIONS**

---

**STAGE DIMENSIONS**

**Width:** 60'6" (portal panel to portal panel)  
8' portal panel on each side reduces proscenium to 44'6"

**Height:** 30' (tympanum in raised position)

**Depth:** Curtain line to back wall 44'6"  
Curtain line to last set of lines 34'10"  
Plaster line to back wall 45'9"

Distance from edge of stage to house curtain line (forestage) .....	5'3"
Height of grid from stage floor .....	66'8"
Grid to roof ....	6'6"
Width of stage from SL wall to rigging SR ...	96'6"
Stage center to SL wall .....	50'
Stage center to SR fly gallery .....	42'3"
Height under fly gallery .....	9'
Offstage space SR .....	15'6"
Offstage space SL .....	20'
Stage floor:.....	Including wing space; built-up, resilient, with sleepers, 7 layer 3/4" plywood covered with white pine tongue and groove flooring, stained black

**LOADING DOCK**

East side of building, stage level, enclosed – 3 Truck Dock

Loading dock: .....38' wide (narrows to 20') x 62' long x 18' high (at lowest point)

Loading door: . ....9' w x 11' h w/3 dock levelers; 62' from stage

Loading door from dock to stage: .....12' wide x 12' high

**RIGGING**

Counter weight lines: .....54 sets of counterweight arbors – holds 1500# each

Length of battens:.....74'

Travel Limits:.....4' above stage to 60'; 40' for first electric, line set number 4

Fly gallery: .....SR - 9'9" above stage floor

Locking rail:.....on SR fly gallery

Loading galleries:.....2 SR - 51' and 59' above stage floor

**See Hanging Plot on separate page**

**DRAPERIES See Hanging Plot**

Act curtain:.....vertical rising manual or automated, opens horizontally by manual means  
Legs: .....5 sets - black, 20' w x 31' h, on tracks to make 35'-60' opening  
Borders:.....5- black, 74' wide, hung flat, 12' high  
Traveler:.....1 – black 2 piece, each panel 40' w x 31' h, mounted on traveler track  
Scrim drop: ....1 - black, 60' wide x 30' high  
Black Out.....3 – black 74' wide x 29' high  
Cyclorama:.....1- beached seamless muslin, 68' wide x 32' high

**ORCHESTRA SHELL**

Consists of 5 sections which when fully extended gives depth from proscenium of 34'. Width is 60' at proscenium, tapering to 44' at extreme upstage position. The shell is completely enclosed with ceiling and sidewalls, isolating the shell from the rest of the stage house. It is equipped with lighting and ventilation. Access to the shell from backstage is by 2 doors in each section for a total of 10 doors. The shell can have a “shorter” configuration for small orchestras, recitals, etc. Shell collapses 10' deep x 60' wide at back wall and flies up through grid giving 30'+/- overhead clearance.

**ORCHESTRA LIFT**

55' wide x 12' deep; tapers to 4' deep at either end. Square footage = 550'. Can be used as forestage, audience seating for 61 patrons or as an orchestra pit. When used at an orchestra pit it can be extended underneath the stage - an area 6' x 44', providing approximately 814 total square feet for pit orchestra. Carpet for pit area is available.

**ELECTRICAL INFORMATION**

- 2- 400-amp 3-phase service Mid Stage Left
- 1- 100-amp 3-phase service Upstage Left
- 2- 400-amp 3-phase service Upstage Right
- 1-60-amp 3-phase service (sound) Upstage Left
- 1-60-amp 3-phase service (sound) Upstage Right
- 1-60-amp 3-phase service (sound) Downstage Left
- 1-200-amp 3-phase service (sound) Downstage Left
- 1-60-amp 3-phase service (sound) Downstage Right
- 1-200-amp 3-phase service (sound) Upstage Right
- 1-100-amp 3-phase service FOH Booth
- 1-60-amp 3-phase service FOH Beam
- 5- 100-amp 3-phase service for shore (bus & truck) power located throughout back lot

**LIGHTING INSTRUMENTS (Subject to availability)**

ETC Obsession II located in control room at rear of auditorium  
3 - Strand Century CD 80 racks w/Strand SV upgrades  
175 - ETC Source Four Pars  
40 - ETC Source Four 19' on FOH Beam  
214 - Various size ETC Source Four Lekos  
24 - 8" 1K Fresnels,  
24 - Par64 MFL Lamps, 24 - Par64 WFL Lamps  
8 - Colortran Farcyc 3 Cels  
4 - Thomas 4 lamp Audience Lights

Followspots:

2 - Lycian 1290 XLT 2K Xenon  
2 - Colortran Xenon 2K  
2 - Kupo Xenon 1K

Other:

1 - DF50 Hazer  
1 - Delta 3000 Fog Machine

**SOUND SYSTEM (Subject to availability)**

Left Right Center Mains:

d&b audiotechnik C Series

Permanent Front Fill System:

32 - Tannoy CMS 6 TDC's.

Sound system zone control & EQ are handled by 4 BSS Sound Web digital audio processors

Monitor Speakers:

8 - d&b audiotechnik Max 12, powered by 4 d&b amplifiers

Side Fill Speakers:

2 - EAW KF650's utilizing a BSS FDS-366 Omnidrive Compact Plus, for crossover

FOH Sound Board:

64 channel Midas Heritage 3000, with 56 mono and 8 stereo inputs

Various microphones, cables etc.

(Detailed list available upon request)

**INTERCOM**

Clear-Com, Intercom, paging, and monitor to all rooms and areas; prompt either side.

**PROJECTION**

16MM, EIKI, EX1600, 1000W Xenon  
NEC 830+LCD  
10 ½ X 14 Screen - front or rear Projection, floor mount or flown  
(Note: additional IATSE personal required to use these items)

**ORCHESTRA EQUIPMENT**

Chairs, music stands w/lites & power distribution, conductors podium w/stand & stool  
Pianos: .....2, Steinway model "D" - 9' concert grand  
.....1 studio upright Yamaha  
(Note: Pianos Must be Tuned by House Tuner)

**WARDROBE**

Separate Room w/rolling racks, ironing boards, irons, Jiffy steamers, basic sewing kit,  
Washer & Dryers (3 sets) – tables & chairs  
(Note: additional IATSE personal required to use these items)

**DRESSING ROOMS**

Stage level:

- .....2 "Star Suites" for 1-3 people equipped w/TV, DVD & VHS & furniture
- .....2 for 4-6 people
- .....2 for 3-5 people
- .....1 for 1-2 person
- .....1 Production Office for 4-6 people
- .....1 Catering Room w/prep area, Microwave, Ice & Restroom seats 60+ people

2<sup>nd</sup> Floor:

- .....1 for 2-4 people
- .....1 for 5-10 people
- .....2 for 6-12 people
- .....2 for 24-30 people

All dressing rooms (both levels) are equipped with lighted mirrors, tables or counters, chairs,  
showers, toilets, and costume racks.

**PLATFORMS**

- .....24 Sico 4' x 8' with heights ranging from 8" to 40"
- .....kick rails, skirting & spacers
- .....2 step units

**MISCELLANEOUS**

Step ladders, "A" ladders, 2 – Geni Hi lift, Marley dance floor, tables, chairs, ballet bars, set of Flags, stools, plexi-glass drum baffle, 8x8 drum riser carpet, podiums

**RUTH ECKERD HALL**

*at the*

*Richard B. Baumgardner Center  
For the Performing Arts*

*1111 McMullen BOOTH RD. CLEARWATER, FL 33759 # 727-791-7060*

**LABOR RATES**

Technical Director: Tyson Smith  
Production Manager: Wes Eubanks

**All Labor supplied by:**      ***I.A.T.S.E. Local 321***  
Paul Paleveda, BA  
7211 N. Dale Mabry Hwy. #209  
Tampa, FL 33614

**EFFECTIVE:** Oct. 1, 2007 – Sept. 30, 2008

**Hourly Rates:**

House Crew (\$26.50)

Steward & Riggers (\$26.50)

HOD's\* (\$24.50)

Additional Stagehands/Wardrobe/Loaders/Spot Ops (\$24.00)

- Minimum call of four (4) hours.
- Any part of an hour is considered one hour.
- Overtime rate of "time and one half" for all hours worked in excess of eight (8) hours in one day & forty (40) hours in one week for the same event; all hours worked between 12:00 midnight and 8:00 A.M. and all hours worked on holidays. Double time after 16 hours worked.
- Meal penalty after five (5) consecutive hours of work.

\*Head Of Department (HOD) include: Deck (Carpenter), Audio, Electrics, Fly Rail, Video, Wardrobe & Props.

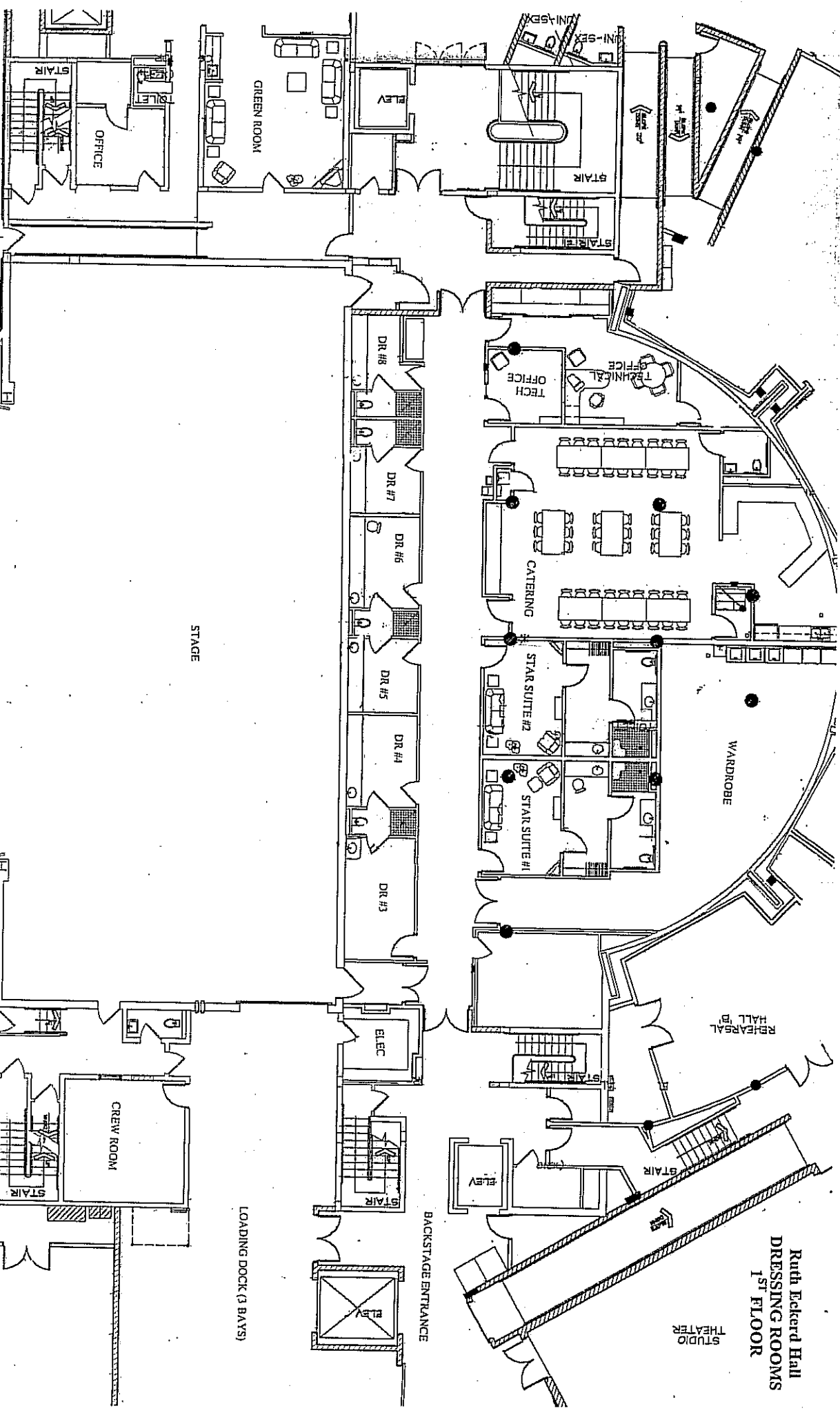
**RUTH ECKERD HALL**  
*at the*  
*Richard B. Baumgardner Center*  
*For the Performing Arts*

**MAIN CONTACT INFORMATION**

Main - (727) 791-7060  
Main Fax - (727) 724-5976  
Operations Fax – (727) 712-2701  
Ticket Office – (727) 791-7400  
Address: 1111 McMullen Booth Rd. Clearwater, FL 33759

**Department Contacts**

**Robert Freedman – President & CEO..... 727-712-2704**  
**Kevin Carlon –Chief Operating Officer.....727-712-2777**  
**Karen Jubrail – Chief Financial Officer.....727-712-2762**  
**Bob Rossi - Director of Entertainment.....727-712-2709**  
**Jeffrey L. Hartzog – Director of Operation.....727-712-2710**  
**Lisa Taylor – Assistant Director of Operations.....727-712-2776**  
**Tyson Smith – Technical Director.....727-712-2711**  
**Wes Eubanks – Production Manager.....727-712-2747**  
**Sandy Villasuso – Senior House Manager.....727-712-2707**  
**Gabe Impemba – Food & Beverage Manager.....727-712-2759**  
**Barb Blaszkiewicz – Food & Beverage Event Coordinator..... 727-712-2705**  
**Cindy Bosselmann - Director of Marketing & Com.....727-712-2724**  
**Megan Funk – Marketing Manager.....727-712-2713**  
**Crystelle Miranda – Marketing Coordinator.....727-712-2715**  
**Susan Crockett – Director of Ticketing/Info Services.....727-712-2757**



Ruth Eckerd Hall  
DRESSING ROOMS  
1<sup>ST</sup> FLOOR

STUDIO  
THEATER

REHEARSAL  
HALL

BACKSTAGE ENTRANCE

LOADING DOCK (3 BAYS)

STAGE

CREW ROOM

OFFICE

GREEN ROOM

ELEV

DR #8

DR #7

DR #6

DR #5

DR #4

DR #3

ELEC

TECH  
OFFICE

CATERING

STAR SUITE #2

STAR SUITE #1

WARDROBE

STAIR

STAIR

STAIR

STAIR

STAIR

STAIR

STAIR

STAIR

STAIR

STAIR

STAIR

STAIR

STAIR

STAIR

STAIR

STAIR

STAIR

STAIR

STAIR

STAIR

ELEV

ELEV

ELEV

ELEV

ELEV

ELEV

ELEV

ELEV

ELEV

ELEV

STAIR

STAIR

STAIR

STAIR

STAIR

STAIR

STAIR

STAIR

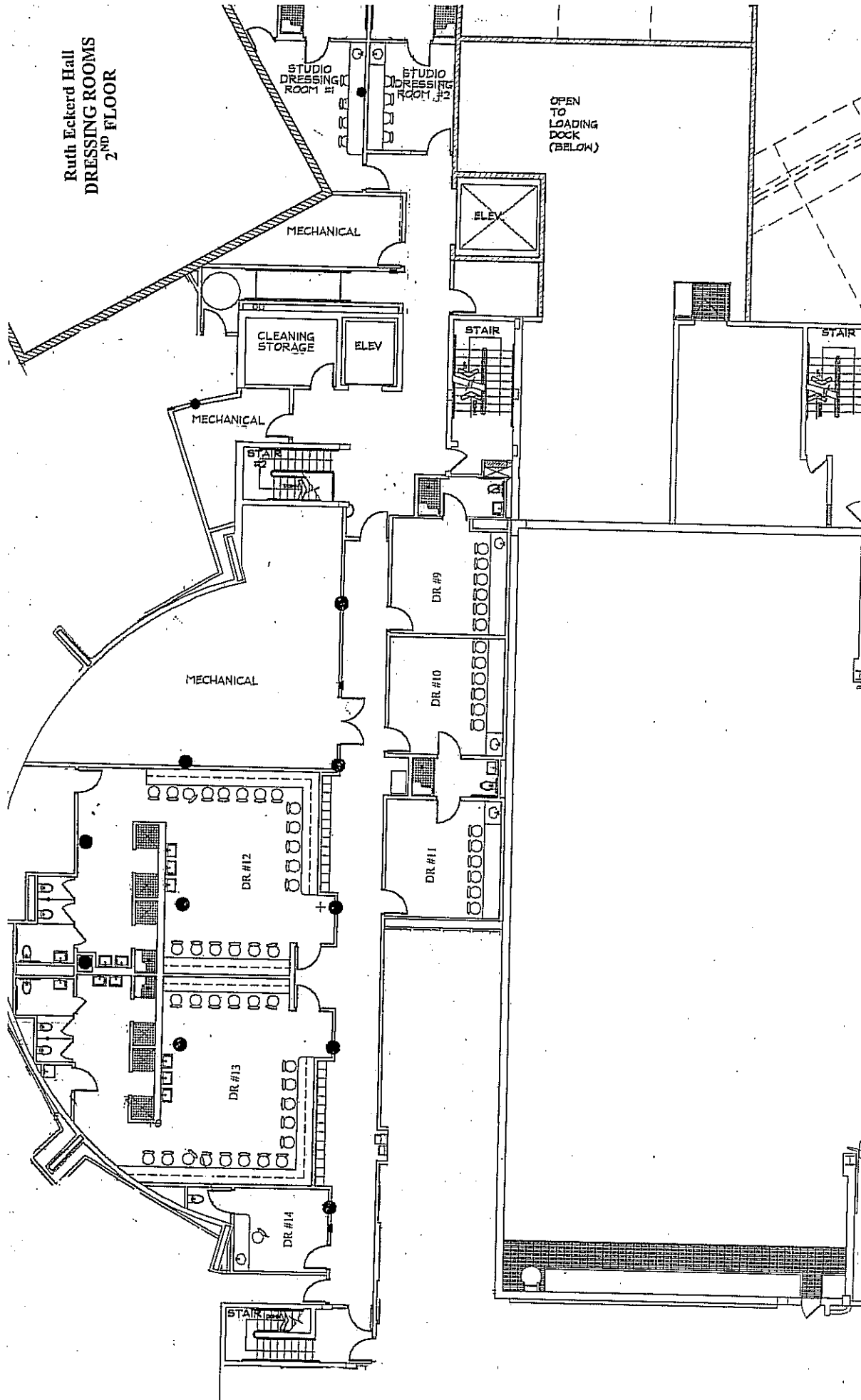
STAIR

STAIR

STAIR

STAIR

Ruth Eckerd Hall  
DRESSING ROOMS  
2<sup>ND</sup> FLOOR



Ruth Eckerd Hall  
1111 McMullen Booth Road  
Clearwater, FL 33759  
Phone: 727-712-2710  
Fax: 727-724-5976

FLY RAIL - 54 LINE SETS

200 AMP  
SND

400 AMP 400 AMP 60 AMP  
SND SND

60 AMP-SND

PIT

104'6"

60'6"

44'6"

100 AMP 60 AMP  
SND SND

LOADING DOCK

200 AMP  
SND  
60 AMP  
SND

400 AMP  
400 AMP

