

**RUTH ECKERD HALL
GENERAL TECHNICAL SPECIFICATIONS**

STAGE DIMENSIONS

Width: 60'6" (portal panel to portal panel)
8' portal panel on each side reduces proscenium to 44'6"

Height: 30' (tympanum in raised position)

Depth: Curtain line to back wall 44'6"
Curtain line to last set of lines 34'10"
Plaster line to back wall 45'9"

Distance from edge of stage to house curtain line (forestage).....	5'3"
Height of grid from stage floor.....	66'8"
Grid to roof.....	6'6"
Width of stage from SL wall to rigging SR.....	96'6"
Stage center to SL wall.....	50'
Stage center to SR fly gallery.....	42'3"
Height under fly gallery.....	9'
Offstage space SR.....	15'6"
Offstage space SL.....	20'
Stage floor:.....	Including wing space; built-up, resilient, with sleepers, 7 layer 3/4" plywood covered with white pine tongue and groove flooring, stained black

LOADING DOCK

East side of building, stage level, enclosed – 3 Truck Dock
Loading dock:38' wide (narrows to 20') x 62' long x 18' high (at lowest point)
Loading door:.....9' w x 11' h w/3 dock levelers; 62' from stage
Loading door from dock to stage:.....12' wide x 12' high

RIGGING

Counter weight lines:.....54 sets of counterweight arbors – holds 1500# each
Length of battens:.....74'
Travel Limits:.....4' above stage to 60'; 40' for first electric, line set number 4
Fly gallery:.....SR - 9'9" above stage floor
Locking rail:.....on SR fly gallery
Loading galleries:.....2 SR - 51' and 59' above stage floor

See Hanging Plot on separate page

DRAPERIES See Hanging Plot

Act curtain:.....vertical rising manual or automated, opens horizontally by manual means
Legs:5 sets - black, 20' w x 31' h, on tracks to make 35'-60' opening
Borders:.....5- black, 74' wide, hung flat, 12' high
Traveler:.....1 – black 2 piece, each panel 40' w x 31' h, mounted on traveler track
Scrim drop:1 - black, 60' wide x 30' high
Black Out.....3 – black 74' wide x 29' high
Cyclorama:1- beached seamless muslin, 68' wide x 32' high

ORCHESTRA SHELL

Consists of 5 sections which when fully extended gives depth from proscenium of 34'. Width is 60' at proscenium, tapering to 44' at extreme upstage position. The shell is completely enclosed with ceiling and sidewalls, isolating the shell from the rest of the stage house. It is equipped with lighting and ventilation. Access to the shell from backstage is by 2 doors in each section for a total of 10 doors. The shell can have a "shorter" configuration for small orchestras, recitals, etc. Shell collapses 10' deep x 60' wide at back wall and flies up through grid giving 30'+/- overhead clearance.

ORCHESTRA LIFT

55' wide x 12' deep; tapers to 4' deep at either end. Square footage = 550'. Can be used as forestage, audience seating for 61 patrons or as an orchestra pit. When used at an orchestra pit it can be extended underneath the stage - an area 6' x 44', providing approximately 814 total square feet for pit orchestra. Carpet for pit area is available.

ELECTRICAL INFORMATION

- 2- 400-amp 3-phase service Mid Stage Left
- 1- 100-amp 3-phase service Upstage Left
- 2- 400-amp 3-phase service Upstage Right
- 1-60-amp 3-phase service (sound) Upstage Left
- 1-60-amp 3-phase service (sound) Upstage Right
- 1-60-amp 3-phase service (sound) Downstage Left
- 1-200-amp 3-phase service (sound) Downstage Left
- 1-60-amp 3-phase service (sound) Downstage Right
- 1-200-amp 3-phase service (sound) Upstage Right
- 1-100-amp 3-phase service FOH Booth
- 1-60-amp 3-phase service FOH Beam
- 5- 100-amp 3-phase service for shore (bus & truck) power located throughout back lot

LIGHTING INSTRUMENTS (Subject to availability)

ETC Obsession II located in control room at rear of auditorium
3 - Strand Century CD 80 racks w/Strand SV upgrades
175 - ETC Source Four Pars
40 - ETC Source Four 19' on FOH Beam
214 - Various size ETC Source Four Lekos
24 - 8" 1K Fresnels,
24 - Par64 MFL Lamps, 24 - Par64 WFL Lamps
8 - Colortran Farcyc 3 Cels
4 - Thomas 4 lamp Audience Lights

Followspots:

2 - Lycian 1290 XLT 2K Xenon
2 - Colortran Xenon 2K
2 - Kupo Xenon 1K

Other:

1 - DF50 Hazer
1 - Delta 3000 Fog Machine

SOUND SYSTEM (Subject to availability)

Left Right Center Mains:

d&b audiotechnik C Series

Permanent Front Fill System:

32 - Tannoy CMS 6 TDC's.

Sound system zone control & EQ are handled by 4 BSS Sound Web digital audio processors

Monitor Speakers:

8 - d&b audiotechnik Max 12, powered by 4 d&b amplifiers

Side Fill Speakers:

2 - EAW KF650's utilizing a BSS FDS-366 Omnidrive Compact Plus, for crossover

FOH Sound Board:

64 channel Midas Heritage 3000, with 56 mono and 8 stereo inputs

Various microphones, cables etc.

(Detailed list available upon request)

INTERCOM

Clear-Com, Intercom, paging, and monitor to all rooms and areas; prompt either side.

PROJECTION

16MM, EIKI, EX1600, 1000W Xenon
NEC 830+LCD
10 ½ X 14 Screen - front or rear Projection, floor mount or flown
(Note: additional IATSE personal required to use these items)

ORCHESTRA EQUIPMENT

Chairs, music stands w/lites & power distribution, conductors podium w/stand & stool
Pianos:2, Steinway model "D" - 9' concert grand
.....1 studio upright Yamaha
(Note: Pianos Must be Tuned by House Tuner)

WARDROBE

Separate Room w/rolling racks, ironing boards, irons, Jiffy steamers, basic sewing kit,
Washer & Dryers (3 sets) – tables & chairs
(Note: additional IATSE personal required to use these items)

DRESSING ROOMS

Stage level:
-2 "Star Suites" for 1-3 people equipped w/TV, DVD & VHS & furniture
-2 for 4-6 people
-2 for 3-5 people
-1 for 1-2 person
-1 Production Office for 4-6 people
-1 Catering Room w/prep area, Microwave, Ice & Restroom seats 60+ people
2nd Floor:
-1 for 2-4 people
-1 for 5-10 people
-2 for 6-12 people
-2 for 24-30 people
All dressing rooms (both levels) are equipped with lighted mirrors, tables or counters, chairs,
showers, toilets, and costume racks.

PLATFORMS

-24 Sico 4' x 8' with heights ranging from 8" to 40"
-kick rails, skirting & spacers
-2 step units

MISCELLANEOUS

Step ladders, "A" ladders, 2 – Geni Hi lift, Marley dance floor, tables, chairs, ballet bars, set of Flags, stools, plexi-glass drum baffle, 8x8 drum riser carpet, podiums

Ruth Eckerd Hall

at the
Richard B. Baumgardner Center
for the Performing Arts
1111 McMullen Booth Rd. Clearwater, FL 33759

CONTACT INFORMATION

Main - (727) 791-7060

Main Fax - (727) 724-5976

Operations Fax – (727) 712-2701

Ticket Office – (727) 791-7400

****Robert Freedman – President & CEO... 727-712-2704****

****Karen Jubrail – Chief Financial Officer... 727-712-2762****

****Bob Rossi - Director of Entertainment... 727-712-2709****

****Kevin Stone – Entertainment Manager... 727-724-5302****

****Jeffrey L. Hartzog – Director of Operations... 727-712-2710****

****Lisa Taylor – Assistant Director of Operations... 727-712-2776****

****Tyson Smith – Technical Director... 727-712-2711****

****Wes Eubanks – Production Manager... 727-712-2747****

****John Goldsboro – Security Manager... 727-712-2755****

****Sandy Villasuso – Senior House Manager & Merchandise Contact... 727-712-2707****

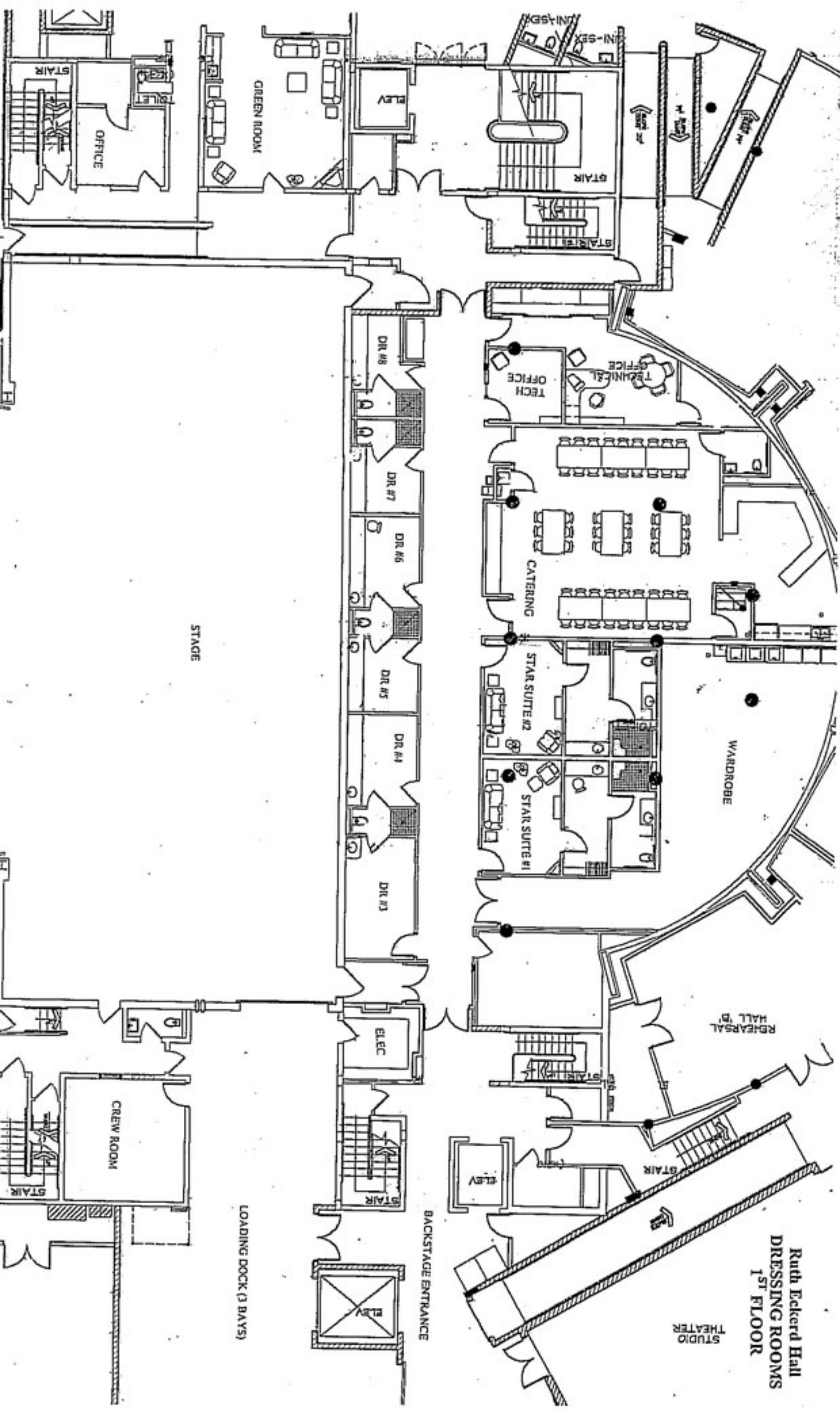
****Mike Jeckel – Food & Beverage Manager... 727-712-2759****

****Carol Bodin – Food & Beverage Backstage Coordinator... 727-712-2745****

****Holly Brown - Director of Marketing... 727-712-2724****

****Katie Pedretty – Public Relations Manager... 727-712-2774****

****Melissa DeMonbreun – Ticket Services Manager... 727-712-2770****



Ruth Eckerd Hall
DRESSING ROOMS
1ST FLOOR

STUDIO
THEATER

BACKSTAGE ENTRANCE

LOADING DOCK (3 BAYS)

STAGE

REHEARSAL
HALL 'B'

WARDROBE

CATERING

TECH
OFFICE

STAR SUITE #2

STAR SUITE #1

DR #8

DR #7

DR #6

DR #5

DR #4

DR #3

ELEC

OFFICE

GREEN ROOM

STAIR

STAIR

STAIR

STAIR

STAIR

STAIR

CREW ROOM

ELEV

ELEV

ELEV

ELEV

ELEV

ELEV

ELEV

ELEV

ELEV

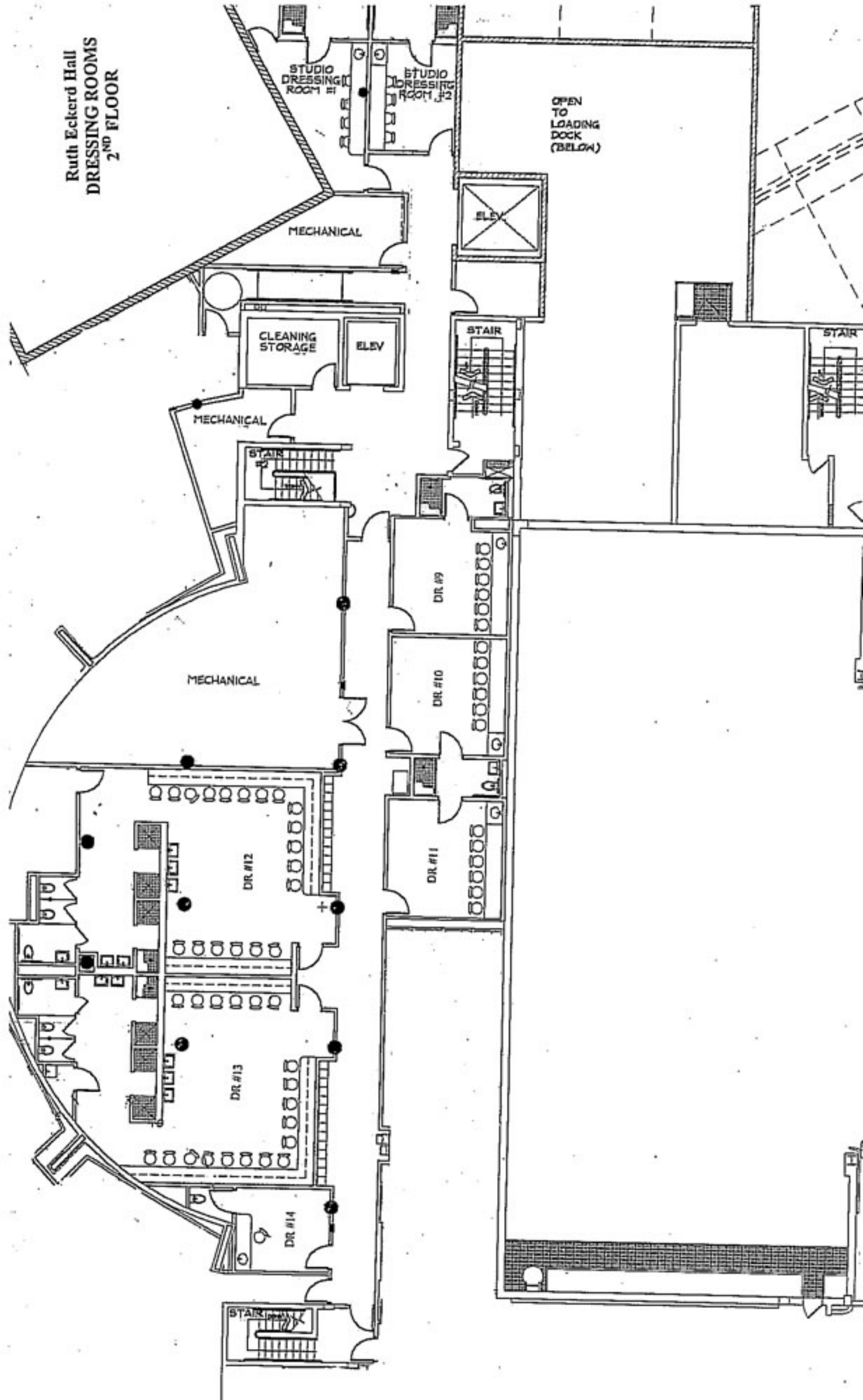
ELEV

ELEV

ELEV

ELEV

Ruth Eckerd Hall
DRESSING ROOMS
2ND FLOOR



Ruth Eckerd Hall
1111 McMullen Booth Road
Clearwater, FL 33759
Phone: 727-712-2710
Fax: 727-724-5976

FLY RAIL - 54 LINE SETS

400 AMP 400 AMP 60 AMP
SND
200 AMP
SND

60 AMP-SND

104'6"

60'6"

PIT

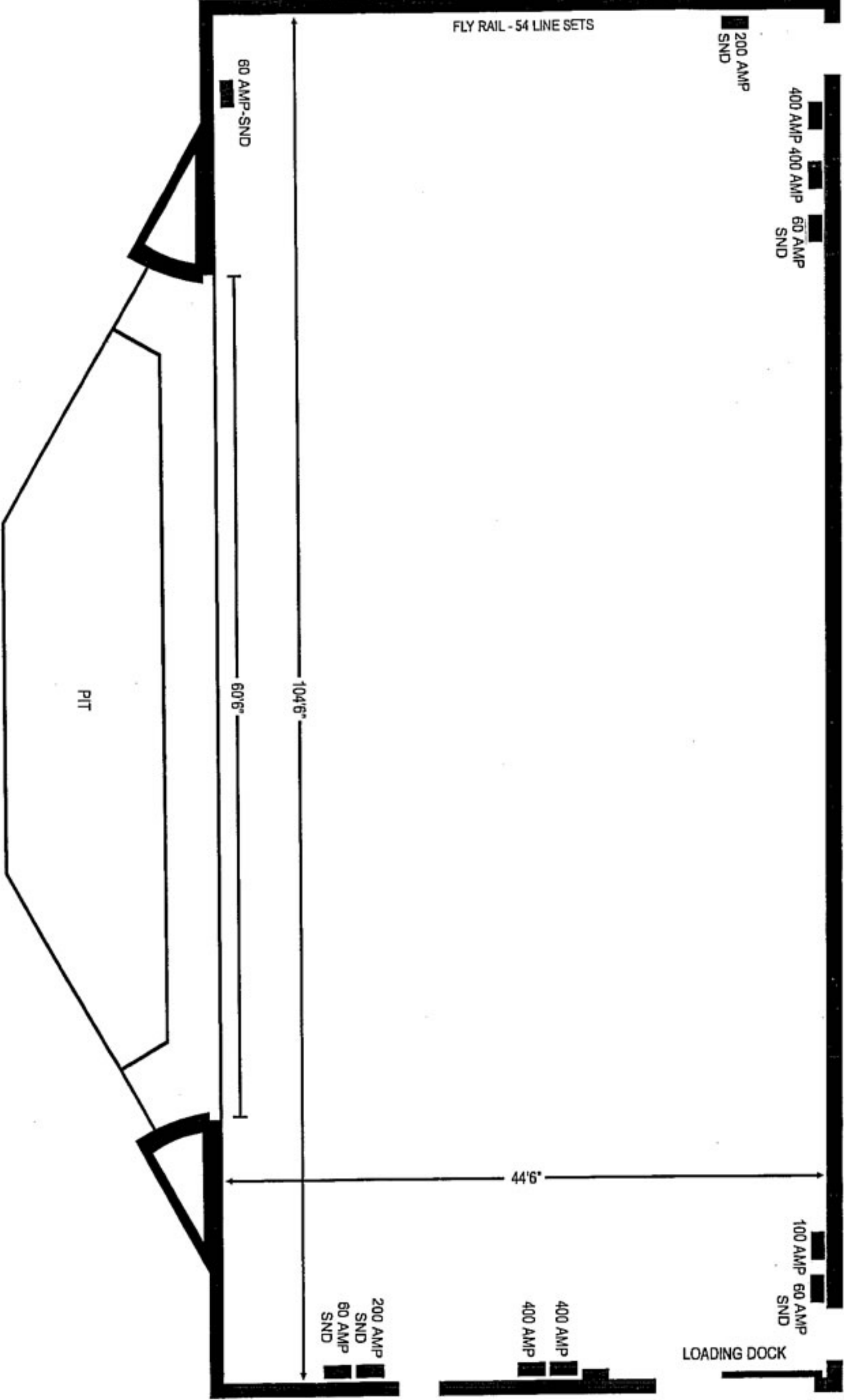
44'6"

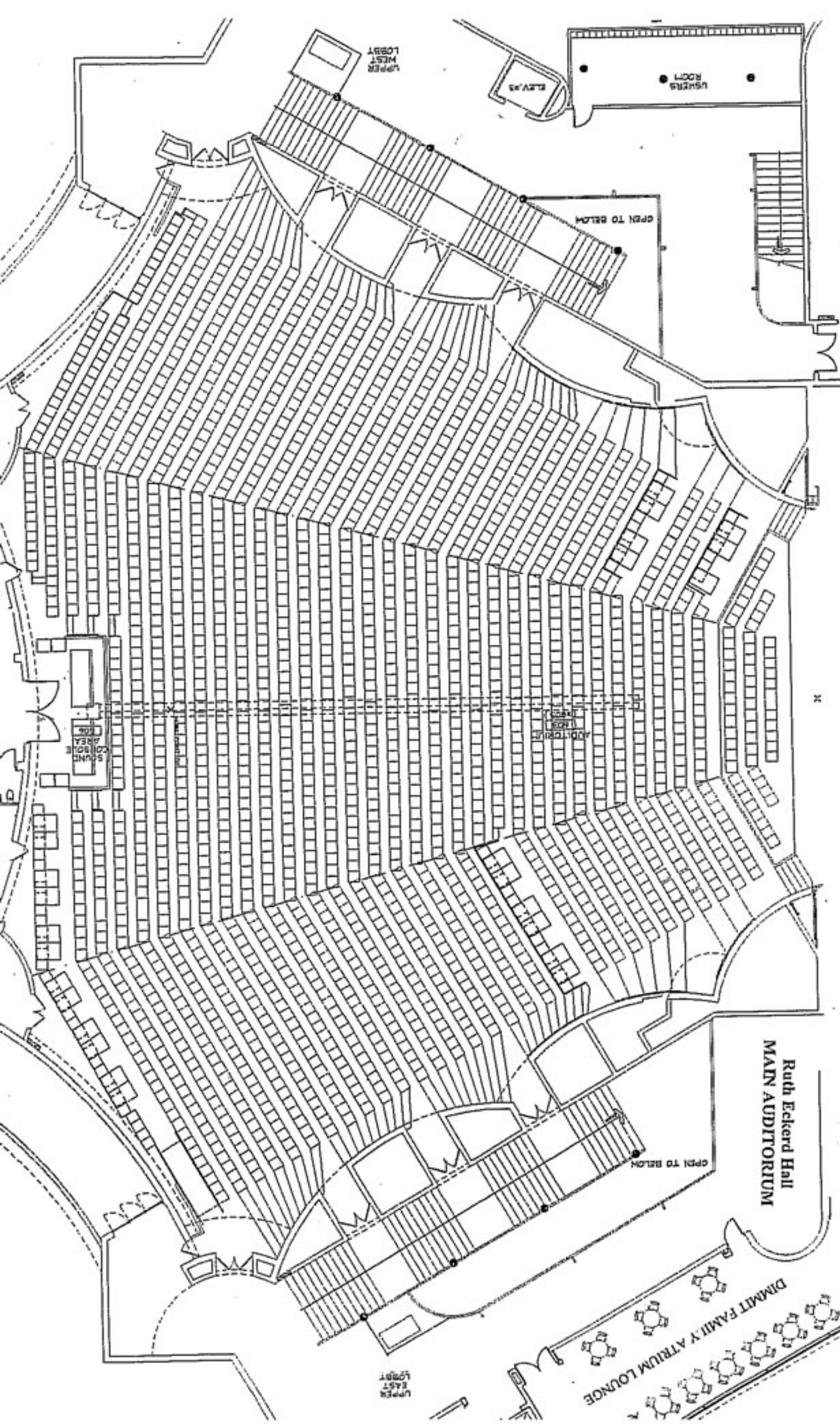
100 AMP 60 AMP
SND

LOADING DOCK

400 AMP
400 AMP

200 AMP
SND
60 AMP
SND





UPPER WEST LOBBY

STAIRS

USERS ROOM

OPEN TO BELOW

SOUND CONTROL AREA

STAIRS

Ruth Eckerd Hall
MAIN AUDITORIUM

DIMMIT FAMILY ATRIUM LOUNGE

UPPER EAST LOBBY