

RUTH ECKERD HALL Technical Theater Specifications

6/7/2025



GENERAL TECHNICAL SPECIFICATIONS

RUTH ECKERD HALL 1111 McMullen Booth Rd Clearwater, FL 33759

TYPE: PROSCENIUM THEATER

SEATING: CONTINENTAL

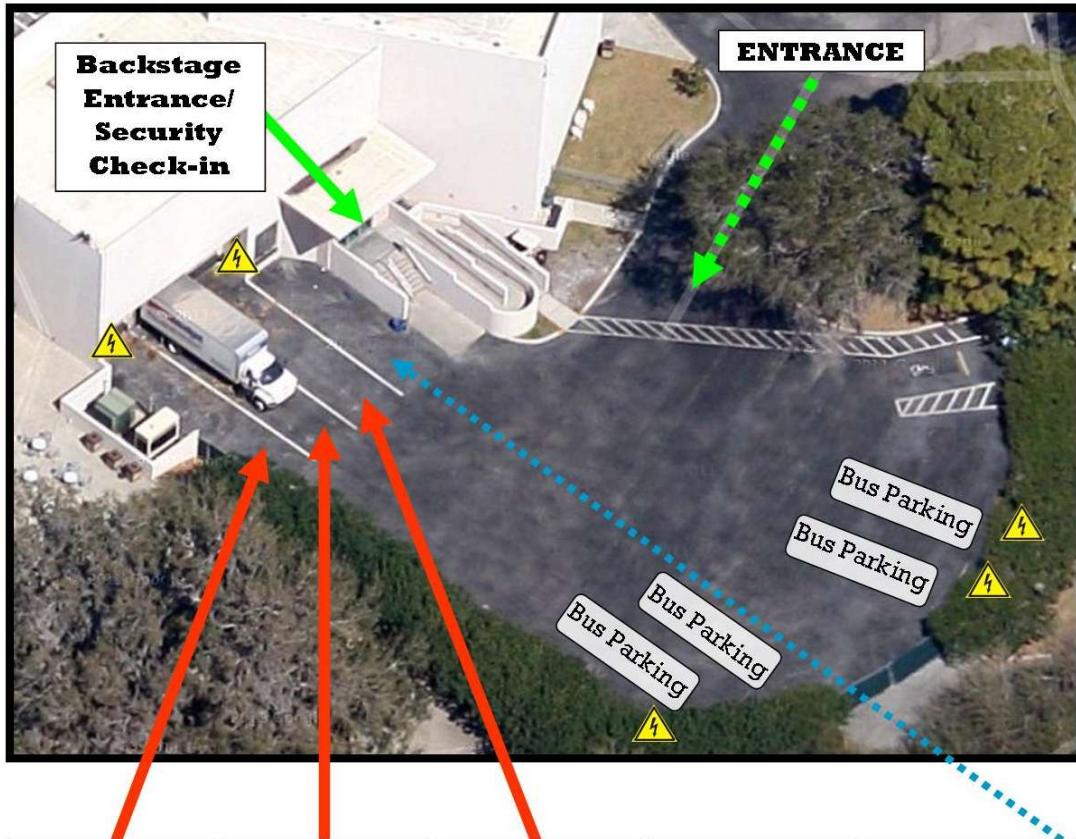
CAPACITY: 2180

TECHNICAL DIRECTOR Tyson Smith PHONE: <u>727-712-2711</u> EMAIL: tsmith@rutheckerdhall.net	HOUSE CARPENTER Tony Carroccia PHONE: <u>727-724-5306</u> EMAIL: TCarroccia@rutheckerdhall.net
PRODUCTION MANAGER Wes Eubanks PHONE: <u>727-712-2747</u> EMAIL: wes@rutheckerdhall.net	HOUSE ELECTRICIAN Dustin Adams PHONE: <u>727-712-2727</u> EMAIL: duadams@rutheckerdhall.net
PRODUCTION MANAGER Jason Weber PHONE: <u>727-724-5337</u> EMAIL: jweber@rutheckerdhall.net	HOUSE AUDIO Phil Dunn PHONE: <u>727-712-2728</u> EMAIL: PDunn@rutheckerdhall.net

RUTH ECKERD HALL Technical Theater Specifications

6/7/2025


Backstage Parking for Tour Vehicles



Loading Dock A

Loading Dock B

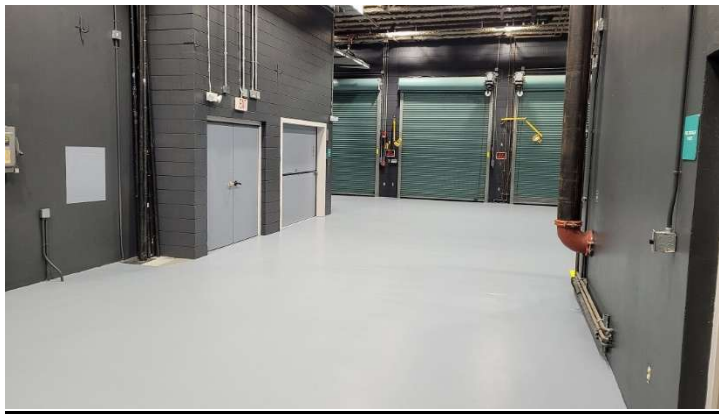
Loading Dock C

220 Volt/100 amp
Bus Shore Power
5 Locations


**Food & Beverage
Loading Dock**
*PLEASE DO NOT
PARK HERE*

Dock is located Up Stage Left
Size 62' l x 38' w (narrows to 20') x 18' h
Stage level with a 70ft push to the Stage
Stage Loading Door is 12' w x 17' h

3 Dock Doors / 9' w x 11' h
2 Dock Plates 5' x 3'
Portable Ramp 13'4" x 3'



RUTH ECKERD HALL Technical Theater Specifications

6/7/2025

STAGE DIMENSIONS

Width:	97'6"	SL wall to SR Fly Rail Stop
Height:	65'	Deck to Bottom of the Grid
	71'6"	Deck to High Steel
Depth:	45'9"	Plaster line to Back wall
	44'6"	House Curtain to Back wall
	34'8"	House Curtain to Last Line Set

Proscenium Opening.....	60'6" w x 30' h
Downstage Edge to House Curtain	5'3"
Stage center to SL wall.....	50'3"
Wing space SL	13'3"
Height under Obstruction SL.....	19'9"
Stage center to SR Fly Rail.....	42'3"
Wing space SR	8'9"
Height under SR Fly Rail	7'8"



STAGE FLOOR

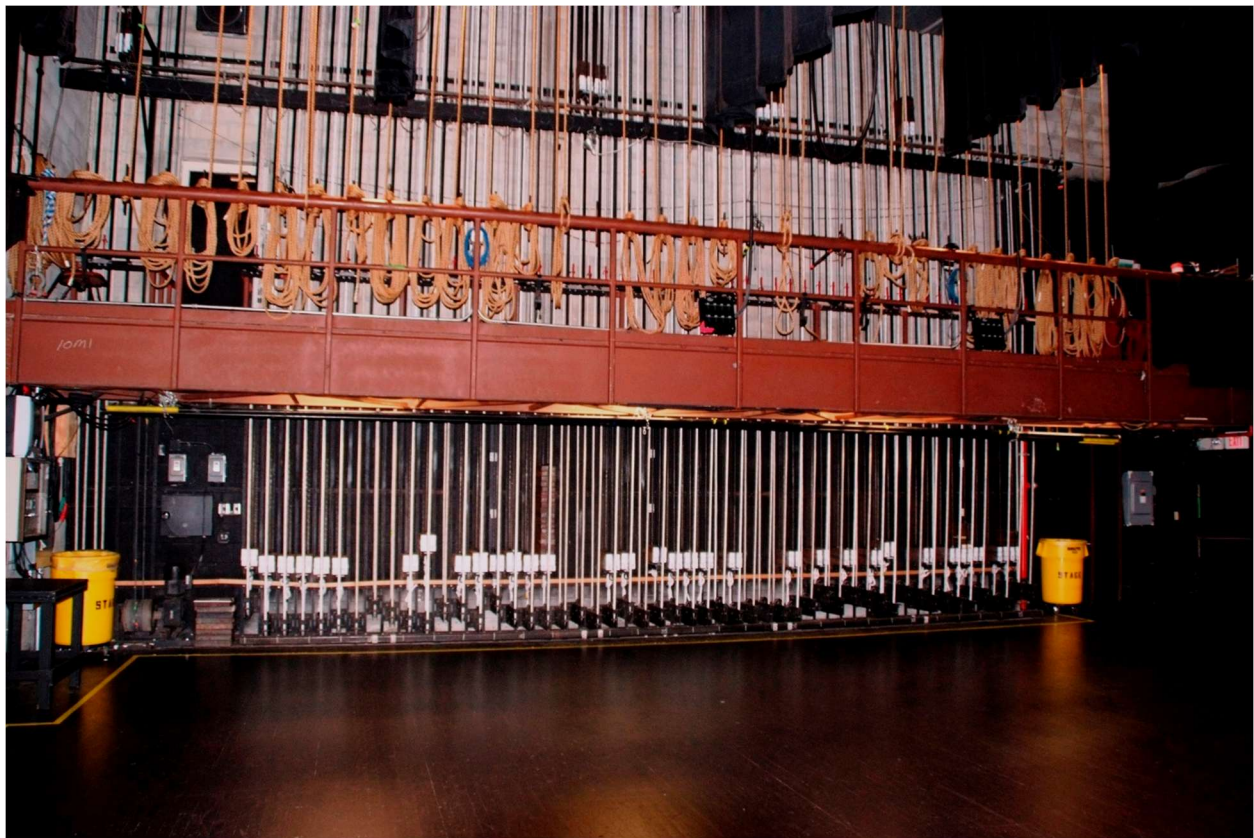
Stage is Painted Black, built with Southern Pine tongue and groove flooring.
Built-up, resilient, with sleepers, 2 Layers of 3/4" plywood.

RUTH ECKERD HALL Technical Theater Specifications

6/7/2025

STAGE RIGGING

Grid Type..... Subway Grating w/ Wells at 5' 15' 25' 35' L/R of CL
Counter Weight Linesets.....53 sets @ 1500lbs capacity each ,1 motorized at 2500lbs capacity (lineset 4)
Lift Lines8x ¼" Wire Rope
Battens74' x 2" Sch.40 Pipe
Lineset Travel Limits.....4' above stage to 60'; 40' for first electric, Line Set #4
Loading galleries2 Stage Right - 51' and 59' above stage floor
Fly Rail / Pin Rail.....Stage Right - 9'9" above stage floor



DRAPERIES

Act curtain:.....Vertical Travel on Single Speed Motor Center Open
Legs:5 sets black, 20' w x 31' h, on separate traveler tracks
Borders:.....5 black, 74' wide, hung flat, 12' high
Traveler:1 black, 74' w x 31' h, mounted on traveler track
Scrim drop:.....1 black, 60' wide x 30' high
Black Out.....2 black 74' wide x 29' high
Cyclorama:1 White beached seamless muslin, 68' wide x 32' high

RUTH ECKERD HALL Technical Theater Specifications

6/7/2025

ORCHESTRA PIT

55' wide x 11'8" deep; tapers to 4' deep at either end. Square footage = 550'. Pit can be used as forestage, audience seating for 61 patrons or as an orchestra pit. When used at an orchestra pit it can be extended underneath the stage - an area 6' x 44', providing approximately 814 total square feet for pit orchestra. Black Carpet for pit area is available.

ORCHESTRA SHELL

The Orchestra Shell is completely enclosed with ceiling and sidewalls, isolating the Performance Space from the rest of the stage house. Consisting of 5 sections which when fully extended gives depth from proscenium of 34'. Width is 60' at proscenium, tapering to 44' at extreme upstage position. It is equipped with 32 ETC Studio D60 LED Fixtures. Access to the shell from backstage is by 2 doors in each section for a total of 10 doors. The shell can be setup in smaller configurations for small orchestras, recitals, etc.

When not in use the Orchestra Shell collapses to 10' deep x 60' wide at back wall and with advance notice may be flown up through grid giving 29'+/- overhead clearance and access to the Back wall of the stage.



RUTH ECKERD HALL Technical Theater Specifications

6/7/2025

FOH RIGGING POINTS



Name	Distance from Down Stage Edge	Distance From Center Line of Stage	Weight Limit	Motor
Sound SR	6" UP of DS Edge	26'1" SR of Center	3000 lbs	Yes
Sound SL	6" UP of DS Edge	26'1" SL of Center	3000 lbs	Yes
FOH LX SR	8'2" DS of DS Edge	18'1" SR of Center	1500lbs	Yes
FOH LX MSR	8'2" DS of DS Edge	11'3" SR of Center	1250lbs	no
FOH LX CS	8'2" DS of DS Edge	0'6" SL of Center	1250lbs	Yes
FOH LX MSL	8'2" DS of DS Edge	11'0" SL of Center	1250lbs	no
FOH LX SL	8'2" DS of DS Edge	18'6" SL of Center	1500lbs	Yes
FOH Pick SR	3'3" US of DS Edge	23'6" SR of Center	500lbs	no
FOH Pick SL	3'3" US of DS Edge	23'6" SL of Center	500lbs	no

Note : All Events Must Observe Fire Curtain Clearance.

RUTH ECKERD HALL Technical Theater Specifications

6/7/2025

ELECTRICAL SERVICES 120v/208v 3 Phase 60hz

LIGHTING /VIDEO / AUTOMATION POWER

Up Stage Right Wall 2x 400 amp
Mid Stage Left Wall 2x 400 amp
Up Stage Left Wall 1x 100 amp
Loading Dock 1x 100 amp
FOH Booth 1x 100 amp
FOH Bridge 4x 60 amp

SOUND / PRODUCTION TRUCK POWER (ISO Transformer)

Up Stage Right Wall 1x 200 amp (House feeder to DSR)
Down Stage Left Wall 1x 200 amp
Loading Dock 1x 200amp

BUS / SHORE POWER (50 amp 4 wire NEMA14-50R)

Backstage Lot 5x Located on Fence Line



RUTH ECKERD HALL Technical Theater Specifications

6/7/2025

FOH LIGHTING / CONSOLE POSITIONS

SOUND MIX POSITION BOH (Road Consoles and ML Balcony Rail)

6 DMX / 2 Ethercon Patchable Lines to Control Booth
Access to 100amp 3 phase for ML Power or Video Projector

CONTROL BOOTH (Balcony Rail)

12 2.4kw Circuits (Dimmers 15-26)
2 ETC 10° Lustr2 LED Leko
DMX PATCH PANEL for All DMX Locations
Ethernet PATCH PANEL for all ETHERCON Locations

HOUSE ROW U (Tech Table Location)

6 DMX/ 2 Ethercon Patchable Lines to Control Booth

SPOT BOOTH SR

2 LYCIAN 1290 XLT 2k Xenon Followspots
2 ETC 10° Lustr2 LED Leko

SPOT BOOTH SL

2 LYCIAN 1290 XLT 2k Xenon Followspots
2 ETC 10° Lustr2 LED Leko

FOH BRIDGE (Ceiling Cove)

4 LYCIAN 1275 1.2k HMI Followspots
10 ETC 14° Luster2 LED Leko
70 2.4kw (Dimmers 27-96)
19 ETC 10° Source Four Leko 750w
35 ETC 14° Source Four Leko 750w
26 ETC 19° Source Four Leko 750w
4 DMX / 2 ETHERCON Patchable Lines from Control Booth

BOX BOOM STAGE RIGHT

8 ETC 14° Lustr2 LED Leko
1 ETC 26° Lustr2 LED Leko
2 DMX / 1 Ethercon Patchable Lines from Control Booth

BOX BOOM STAGE LEFT

8 ETC 14° Lustr2 LED Leko
1 ETC 26° Lustr2 LED Leko
2 DMX / 1 Ethercon Patchable Lines from Control Booth

STAGE LIGHTING / CONSOLE POSITIONS

RUTH ECKERD HALL Technical Theater Specifications

6/7/2025

DOWNSTAGE RIGHT

6 2.4kw Circuits (DMX 1.243-248)

6 DMX / 2 Ethercon Patchable Lines to Control Booth

DOWNSTAGE LEFT

6 2.4kw Circuits (DMX 1.133-138)

6 DMX / 2 Ethercon Patchable Lines to Control Booth

UPSTAGE RIGHT

12 2.4kw Circuits (DMX 1.191-202)

6 DMX / 2 Ethercon Patchable Lines from Control Booth

UPSTAGE LEFT

12 2.4kw Circuits (DMX 1.179-190)

1 Ethercon Patchable Line from LX Room

MIDSTAGE LEFT

6 DMX / 2 Ethercon Patchable Lines from Control Booth

LIGHTING CONSOLES / DIMMING

GrandMA2 Full

GrandMA3 Full (Limited Availability)

ETC ION XE 12k with RPU Tracking Backup

ETC ION XE 20 12k Lighting Office/Onstage

3 Strand Century CD 80SV Racks (280 2.4kw + 4 6kw)

3 ETC Sensor Racks (288 2.4kw)

FOLLOWSPOTS

4 Lycian 1290 XLT 2K Xenon

4 Lycian 1275 LT 1.2k HMI

STAGE LIGHTING INSTRUMENTS

24 ETC Lustr 2 Leko (Pipe End systems)

48 ETC D60 Lustr2 Par (Overhead and Cyclights)

92 ETC 26° Source Four Leko 750w (Pipe Ends, Dance Towers)

46 ETC 36° Source Four Leko 750w (Pipe Ends, Dance Towers)

08 ETC 50° Source Four Leko 750w (Not Hung)

08 Thomas 4 lamp Audience Lights 650w

RUTH ECKERD HALL Technical Theater Specifications

6/7/2025

MOVING LIGHTS

22 Chauvet Maverick Storm 1 Hybrid
08 Chauvet Maverick Storm 2 Profile
08 Vari*lite VL2500 Spot Fixtures
18 Vari*lite VL3000 Spot Fixtures (Not Hung)
32 Chauvet Rouge 3 Wash LED



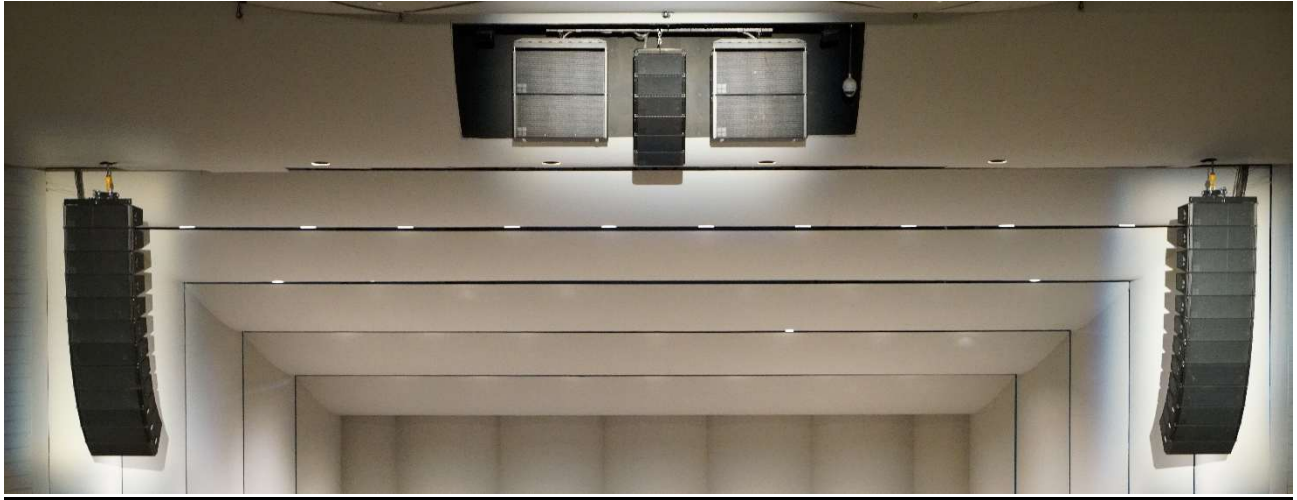
FX + ACCESSORIES

2 Martin Atomic 3000 Strobes
1 DF50 Hazer
1 Delta 3000 Fog Machine
1 16" Mirror Ball with Motor

RUTH ECKERD HALL Technical Theater Specifications

6/7/2025

RUTH ECKERD HALL SOUND SYSTEM SPECS



LEFT/RIGHT MAINS

9 KSL8 and 3 KSL12
per side for the left and right,
Powered by 40D amps.



SUBS

Four (4) D&B SL-GSUB on the ground (2 per side), Powered by D80 amps.
Four (4) D&B SL-SUB Flown in the center cluster, Powered by D80 amps.

CENTER CLUSTER

Four (4) XSL8 and
Two (2) XSL12,
Powered by 40D
amps.



PORTABLE FRONT FILL

8 **d&b** E3 speakers are available for center front fill, placed long side down atop the stage floor.
Dimensions are approximately 8" tall x 14" wide. These are powered by 40D amp.
2 **d&b** V10P one per side powered by 40D amp provides coverage for the first 3 rows.

RUTH ECKERD HALL Technical Theater Specifications

6/7/2025

PERMANENT FRONT FILL

This consists of 28 / **Tannoy** CMS 6 TDC's in front of the first row of seats, for when the orchestra pit is seated. A second set of 24 / **Tannoy** CMS 6 TDC's is mounted in the Down stage pit wall in front of the 3rd row. This set is always used regardless of the orchestra pit configuration.

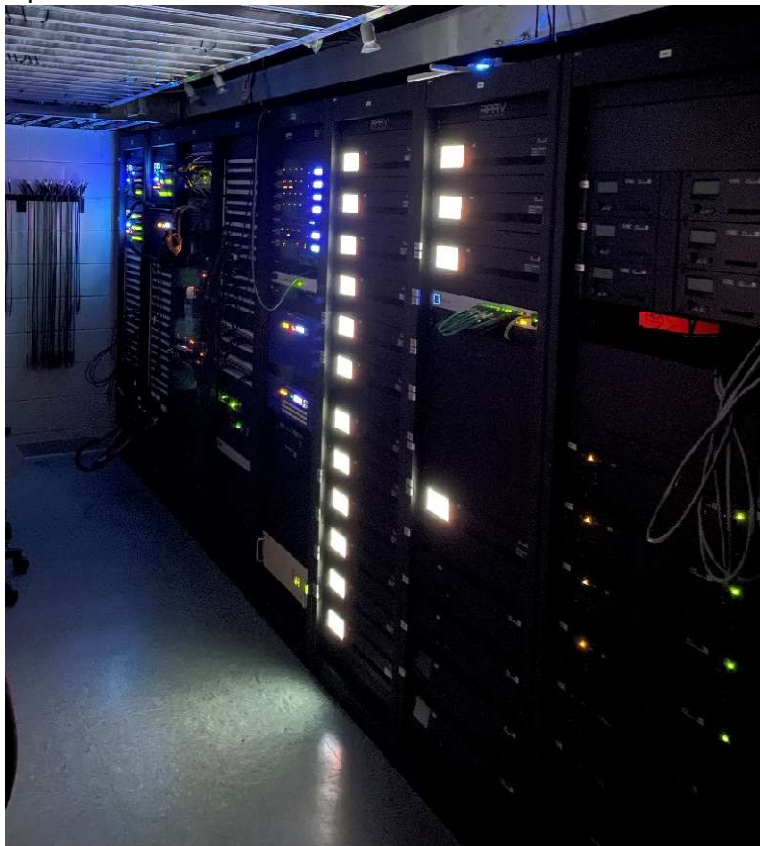
MAINS AMPLIFICATION

All **d&b** speakers are powered by **d&b 40D /D80** amplifiers. This arrangement provides the best possible sound, performance and protection for the speaker system, and does away with the need for any kind of system protection /compression at the main outputs of the console. These amplifiers provide all the needed crossover points and EQ required by each speaker type.

The **TANNOY** CMS 6 speakers are powered by a Crest CKV 2400 70v amplifier.

Sound System Control

BSS London digital audio processors. This allows multiple input configurations and input / output routing. Independent Zone EQ and Control for Main PA and Back of House system.



RUTH ECKERD HALL Technical Theater Specifications

6/7/2025

MONITOR SPEAKERS

- 13 **d&b** Max12's.
- 03 **Galaxy HSVC Personal Hotspot**
- 01 **d&b** C-4 sub (Drum Sub)
- 01 **d&b** B2 sub (Drum Sub)

IN EAR MONITORS

- 08 **Sennheiser EK IEM G4** Receivers (4 A-band, 4 A1-band) **NO HEADSETS PROVIDED!**
- 02 **Sennheiser AC41** Antenna Combiner
- 01 **Professional Wireless** 2way passive Splitter/Combiner
- 01 **Professional Wireless** Helical Antenna w/25' Ext cable

SIDE FILL MONITORS

- 2 **d&b** C4-TOP with 4 C4 subwoofers powered by P1200A amps or
- 2 **d&b** C7-TOP with 2 B2 subwoofers powered by E-PAC and A1 Mainframes.

MONITORS AMPLIFICATION

The **d&b** monitor speakers are powered by 4 **d&b p1200a** amplifiers. Each amplifier has the capability of powering 1 active or 2 passive mixes, by means of a switch on the controller module of the amplifier.

3 additional **d&b D12** dual channel amplifiers provide extra amplification for additional monitor mixes and/or drum-sub amplification. These amplifiers function in the same fashion as above, when powering the Max 12 monitors. Additionally these amplifiers have the capability of powering any d&b speaker.

4 additional **d&b E-Pac** single channel amplifiers also provide extra amplification for additional monitor mixes and/or drum-sub amplification. These amplifiers have the capability of powering any d&b passive speaker.

The above combination of amplifiers can provide a maximum of 7 active plus 2 passive mixes, or 18 total passive mixes, or some other combination of passive and active.

If the drum sub is used it will require one of the passive mixes.

The Galaxy Hotspots are powered by Crest FA2401 amps (four channels total) which are also available to power other non- **d&b** speakers that may be required.

RUTH ECKERD HALL Technical Theater Specifications

6/7/2025



DIGITAL SOUND CONSOLES

Consoles for front of house and monitors are 2 168 channel **Midas ProX**, with 144 mono and 24 auxiliary inputs. The consoles are outfitted with three option cards: a DL443 ¼" TRS line input/output card, a DL442 XLR line output card, and a DL452 AES3 input/output card. A DL231 is interfaced with the console to give a further 24 XLR mic inputs as well as 24 XLR line outputs.

A **Midas DL451** is an optional interface for either **Midas ProX** consoles which would provide a further 16 XLR line outputs as well as 8 inputs and 8 outputs of AES3.

Console option 2 for front of house or monitors is a 52 channel **Yamaha PM5D**, with 48 mono and 4 stereo inputs. The console also has 4 additional stereo channels for internal routing. This is a full digital console that is self-contained with compressors, gates EQ and effects.

RUTH ECKERD HALL Technical Theater Specifications

6/7/2025



ANALOGUE SOUND CONSOLES

Console option 3 for front of house or monitors is an analogue 64 channel **Midas Heritage 3000**, with 56 mono and 8 stereo inputs. The console has 24 Group outputs, re-configurable in pairs as mono aux sends, stereo Aux sends or sub groups. There is also a Left, Center and Right output and 8 matrix outputs.

RUTH ECKERD HALL Technical Theater Specifications

6/7/2025

INSERTS / EFFECTS

Analog EQ

There are 8 channels of Klark Teknik Dn 370 Eq.

Digital EQ

There are 10 channels of Klark Teknik Helix Dn 9340/9344 Eq.

In each channel, you have access to: a 31-band multi-mode graphic equaliser: a 12-band parametric equaliser: four configurable filters per channel: up to 1s of delay per channel: and two dynamic Eq filters.

Comps

6 Channels of dbx 162 SL, 6 Channels of dbx 1066, 8 Channels of BSS 404

Noise Gates

8 channels of Drawmer DL-201, 4 channels of BSS 504

Other

2 BSS 901 II dynamic Equalizers.

Effects

Reverb: 1 TC Electronics M-One XL, 1 TC Electronics M3000
 1 Yamaha; SPX 990, 2 Yamaha SPX 2000
 1 Lexicon PCM 91
Delay: 1 TC Electronics D-Two
Harmonizer: 1 Eventide Eclipse

Playback/Record

2 Denon DN T620 CD/Cass combo
2 Marantz PM 331 CD w / wired remotes
1 Marantz CRD 510 CD recorder
1 Tascam Md 301mkII Mini Disc recorder
1 Tascam CD-400U

Audio Analyzer

Klark Teknik Dn 6000

RUTH ECKERD HALL Technical Theater Specifications

6/7/2025

MICROPHONES

<u>Inventory</u>	<u>Brand</u>	<u>Model</u>
9	Shure	SM-57
9	Shure	SM-58
3	Shure	SM-81
2	Shure	Beta 52
4	Shure	Beta 58a
1	Shure	Beta 57a
3	Shure	Beta 87a
2	Shure	Beta 91
1	Shure	Beta 91a
5	Shure	Beta 98 D/S
5	Shure	Beta 98 H/C
4	Shure	KSM 27/SL
6	Shure	KSM 109/SL
2	Shure	KSM 137
1	Audix	D1
3	Audix	D2
1	Audix	D4
1	Audix	D6
2	Sennheiser	e609 Silver
4	Sennheiser	MD-431
4	Sennheiser	E865
3	Sennheiser	MD-421
6	Sennheiser	E604
1	AT	A 4050
1	EV	RE-20
7	Crown	PCC-160's
2	AKG	C1000
1	AKG	D112
1	AKG	D160

WIRELESS MICROPHONES

3 SHURE UR4D+ (Dual Channel Diversity Receiver)

1 SHURE UR4D (Dual Channel Diversity Receiver)

4 UR1 (Bodypack Transmitters)

1 MKE2 – TA4F / LAV, 4 SHURE 93's, 2 E6 COUNTRYMAN

RUTH ECKERD HALL Technical Theater Specifications

6/7/2025

8 UR2 (Handheld Transmitters)

8 SM58's, 2 BETA 58A's, 2 BETA87C's, 2 BETA 87A's

DI BOXES:

Active:

4 BSS AR-133

4 Countryman Type 85

4 Klark Teknik DN-100

Passive:

2 Radial JDI

2 Radial JDI Duplex

2 Pro Co DB-1

MICROPHONE STANDS:

9	Ultimate	Straight Round Base
5	Konig & Meyer	Straight Tripod no Boom
16	Konig & Meyer	Tall With 2 part Boom
9	Konig & Meyer	Short With 2 part Boom
5	Generic	Short w table top base

MIC LINES, SUBSNAKES, SPLITTER SYSTEM:

The splitter System Consists of three **Midas DL431** active mic splitters, and two **Midas DL231** active mic splitters. There are an additional two DL231s, one located with each **ProX**. The **DL 431s** provide three sets of Analogue outputs and then an additional two digital outputs strictly for the Pro series consoles. The **DL231s** currently only provide Local I/O for the **ProX** consoles

Mic lines 1-54 are located on a panel Down Stage Left, and are accessible as individual XLR's or in groups of 12 that terminate to 5 / **Whirlwind W1** multipin connectors.

3 / 75' and 3 / 100' 12 pair **W1** subsnakes connect from the panel to 6 custom **Atlantic Professional Audio** 12 channel subsnake boxes.

Mic lines 1-54 normal through **Midas DL431** active mic splitters.
Which normal through to channels 1-54 at the FOH console.

The second and third output of theses splitters can be sent to either Stage Left, Stage right or Broadcast position in the loading dock. The digital outputs for the Pro series consoles can be sent to either Stage left or Stage right as well as FOH.

RUTH ECKERD HALL Technical Theater Specifications

6/7/2025

The DL431 analogue outputs terminate to **Ramtech** 54 channel **Ramlatch** multipin connectors. The **DL431** and **DL 231**'s digital outputs terminate via Cat6 to corresponding **Midas DL371** and **Neutron** Processors for the Pro series consoles. The Processors then can connect to the consoles by **Neutrik Ethercon** Cat6 or **Neutrik Opticalcon DUO** fiber optic.

50' **Ramlatch** to fan-tail 54 channel snakes can be provided to patch into a splitter output as well as 15' **Ramlatch** to 54 channel output stage box's. 25' **Ethercon Cat6** or 50' **Opticalcon DUO multimode** cables can be provided as a pass-through option for Digital snake runs from stage to FOH.

Mic lines 55-108 are located Down Stage Left. These also contain individual XLR's and 5 / 12 pair **W1** multipin connectors. Mic lines 55 – 72 Normal through Midas DL 431 Splitters. Mic lines 73 – 96 Normal to Midas DL231 Splitters. Mic lines 97 - 108 do not normal to anywhere, but are patchable to splitter inputs or straight to the FOH console.

There are 12 patchable mic lines Up Stage Left and 12 Up Stage Right. These appear as individuals or 12-channel multipair also.

Additional individual mic lines are located near the Down Stage edge, on the Orchestra Pit, the Orchestra pit ledge and the FOH lighting bridge.

CLEARCOM + A/V LINES

At all of the above panel locations there are audio and video tie lines and **Clearcom** jacks.

Each dressing room also contains 1 / audio and 1 / video tie line as well as **Clearcom** jacks.

A 2 channel **Clearcom** System is provided in the above locations as well as spot, fly and loading bridge locations.

A **PRODUCTION TABLE** position with all the necessary hook ups is provided in the center of the house at row U.

VIDEO

VMix 4k Video Switcher (computer based)

BARCO RLM W14 14,500 Lumens HD 1920X1200 Native

16 X 9' Stumpfl Front Projection Screen

RUTH ECKERD HALL Technical Theater Specifications

6/7/2025



WARDROBE

Separate Room w/phone, rolling racks, ironing boards, irons, Jiffy steamers, basic sewing kit, Washer & Dryers (3 sets) – tables & chairs

Note! additional IATSE personal required to use these items

PROPERTIES

1 Steinway model "D" - 9' concert grand
1 U1 Yamaha Upright Piano
90 Musician Chairs
10 Cello Chairs
90 Music Stands
60 Music Stand Lights
1 Conductor's Podium
5 Wet Mops with 3 Buckets
3 Dozen Publix Doughnuts

Note! additional IATSE personal required to use these items

RUTH ECKERD HALL Technical Theater Specifications

6/7/2025

DRESSING ROOMS

Stage level:

- 2 "Star Suites" for 1-3 people w/TV/DVD/VHS, refrigerator & furniture
- 2 for 4-6 people
- 2 for 3-5 people
- 1 for 1-2 people
- 1 Production Office for 4-6 people
- 1 Catering Room w/prep area, Microwave, Ice Machine, 2-TV's & Restroom seats
60+ people

2nd Floor:

- 1 for 2-4 people
- 1 for 5-10 people
- 2 for 6-12 people
- 2 for 24-30 people

All dressing rooms (both levels) are equipped with phones, lighted mirrors, tables or counters, chairs, showers, toilets & costume racks.

Note: Wireless Router & Computer available for use.



RUTH ECKERD HALL Technical Theater Specifications

6/7/2025



CATERING AREA

Catering is located backstage and provides room for up to 54.

